

PT. MASTER MANUNGGAL FABRIKASI



# COMPANY PROFILE

# About Us

## PT. MASTER MANUNGGAL FABRIKASI

**M-FAB provides value added rebar solution for optimization and fabrication of rebar in a factory environment.**



PT. MASTER MANUNGGAL FABRIKASI (M-FAB) is proud to become the pioneer in Cut and Bend Services in Indonesia and bring rebar solutions for the construction industry to world-class level. We invested on high-end automated equipment and rebar management software.

Currently in Indonesia, predominantly most of the rebar work is being done at construction site. These practices of working rebar at the construction site result in significant material wastage, logistic inefficiencies (double handling), additional site cost, and most importantly imprecise and unsafe bends and cuts.

M-FAB give solution to all of these problems. By using our service, 60% to 70% of the rebar processing can be done in our factory. Thus, it will reduce the needs of on-site space, reduce and control material wastage, reduce the amount of on-site labor, improve on-site logistics, and improve efficiency and time schedule.

## What We Offer



### Fabrication in a Factory

Fabrication of rebar in a factory environment provides a value-added rebar solution for optimization, as well as ensure the quality of the fabricated rebar



### High-end Automated Equipment

Along with the increased development of construction in Indonesia, MFAB invested in high-end automated equipment with advanced technology to support our work processes.



### Maximum Service

M-Fab prioritizes integrity and commitment in carrying out the best service for the customers.



### Rebar Management Software

Optimizing rebar requires proper rebar management, then a system and rebar management software is needed to ensure that every rebar work is monitored, controlled, recorded, and stored



### Expert

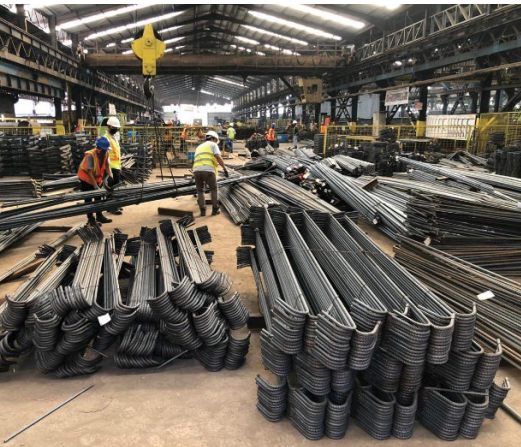
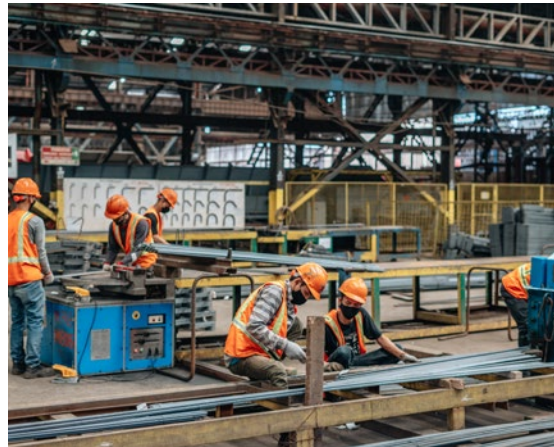
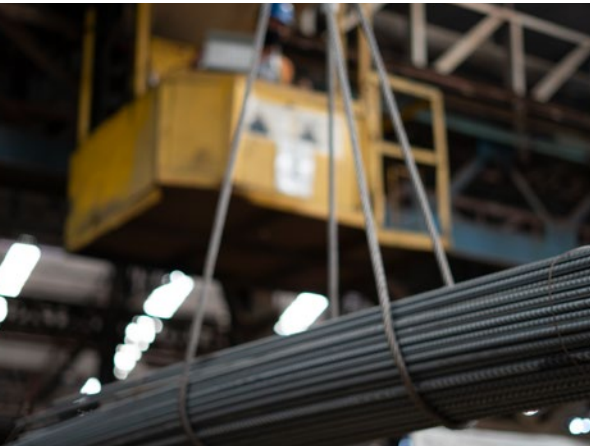
M-Fab is experienced and specializes in rebar fabrication, therefore that experts could work with the best accuracy and quality. Work by prioritizing work safety and punctuality.



### Certainty

Fabrication of rebar in a factory environment provides certainty and assurance in the fabrication management, rebar wastage, fabrication quality, consistent, and precise cuts and bending.

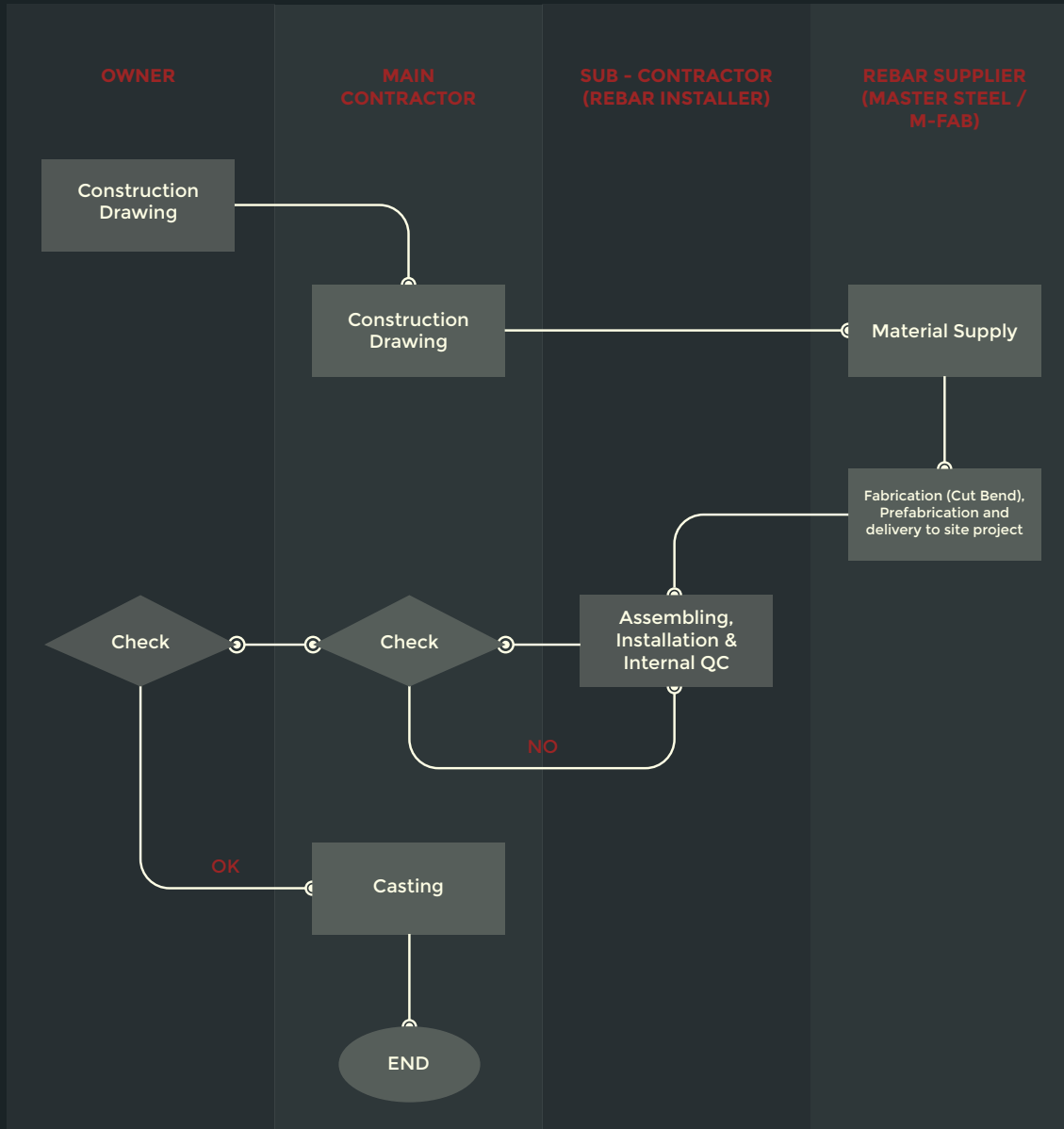




## Benefits

- Minimize rebar wastage. ✓
- Rebar cut length follow the requirements. ✓
- Consistent and precise cuts and bending. ✓
- Elimination of double handling. ✓
- Simplicity of management. ✓
- Safer construction site. ✓
- Punctuality with schedule. ✓

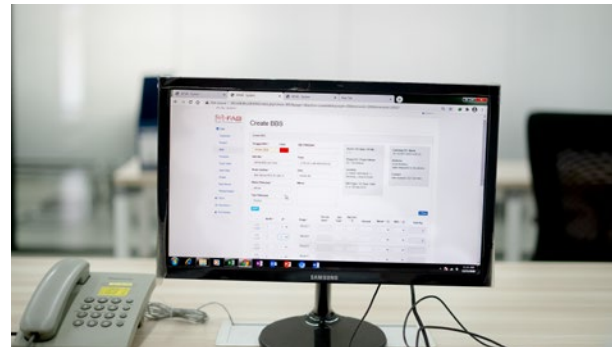
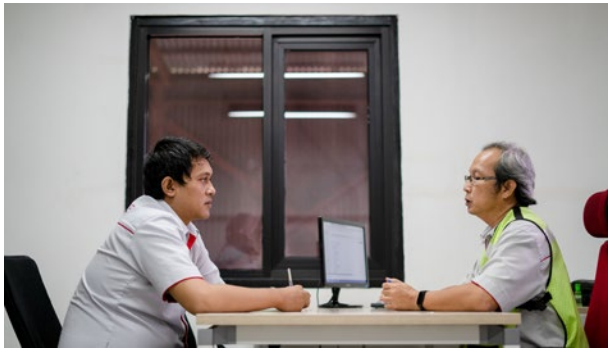
# Flow Chart Metode Kerja



# Engineering

The establishment of Department Engineer represents MFAB's effort to provide experienced experts who will overcome customers' striking problems on shop drawing, rebar efficiency through design proposals, and bar bending schedule (BBS).

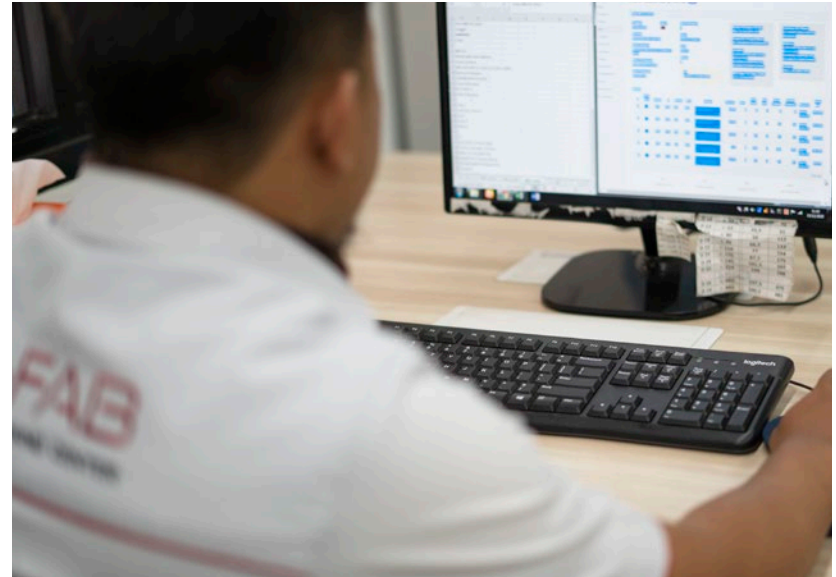
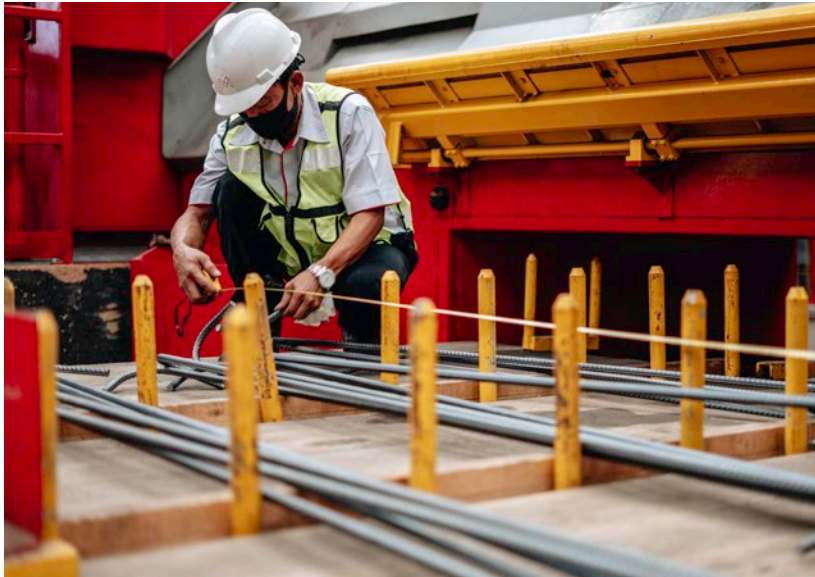
Our commitment to quality is not only manifested in the finalization of the shop drawing, but also reflected in the provision of comprehensive service, monitoring and controlling rebar design and usage.



## Quality Control & Logistic

The commitment to quality represents the Company's principal objective in customer satisfaction, manifested in the production process. Quality Control is responsible for monitoring the rebar fabrication process and makes sure fabrication follows the requirements and bar bending schedule (BBS).

The same efforts implemented in the logistics department to monitoring the delivery order with software and have been proven effective in the delivery process. The logistic department makes sure delivery order and material delivery match.





# Sample Bar Bending Schedule (BBS)

# Workshop

Workshop Area  
6.100 m<sup>2</sup>

Production Capacity  
4.500 Ton / month

Worker Amount  
± 80 ~ 120 Manpower

PT. Master Marunggal Perkah  
**M-FAB**  
REBAR PROCESSING CENTER  
RSD JAYA KONTROLSE - ADHI  
Project : 20km-Ruas Tji Oin Kota Jakarta Ruas 1  
Team Of Work : COLLUMN STAGE 1  
Type : PUS  
Quantity Unit : 1

BAR BENDING SCHEDULE (BBS)

BBS NO. : M-FAB-BBS-741-10  
REF SHOP DRAWING NO : 6A02/SMS/CD/PS-25/2001

Bar No	Dia Bar (mm)	Sketch	Bending Dimension(mm)								Total bar	Bending mm	Qty/ Type	Qty (unit)	Weight (KGS)	Total Cutting	Total Weight	Qty	Remarks
			#	#	#	#	#	#	#	#									
P1	Ø32		2,574	206	500						8,200		72	1	8,32	72	3,074,36	400	
P1a	Ø32		9,574	206	500						10,000		72	1	8,32	72	4,943,20	400	
P3	Ø16		2,764	88	2,400	2,400	275	133	96	10,800		106	1	1,36	106	1,618,30	400		
P4	Ø16		2,764	133	96					3,750		218	1	1,36	218	1,869,08	400		
P5	Ø16		2,764	133	96					3,200		218	1	1,36	218	1,617,86	400		
P9	Ø16		1,800	88	100					2,400		212	1	1,36	212	826,66	400		
			<b>TOTAL</b>														<b>14,383,86</b>		
Ø16											Ø32						<b>14,383,86</b>		
																	<b>14,383,86</b>		

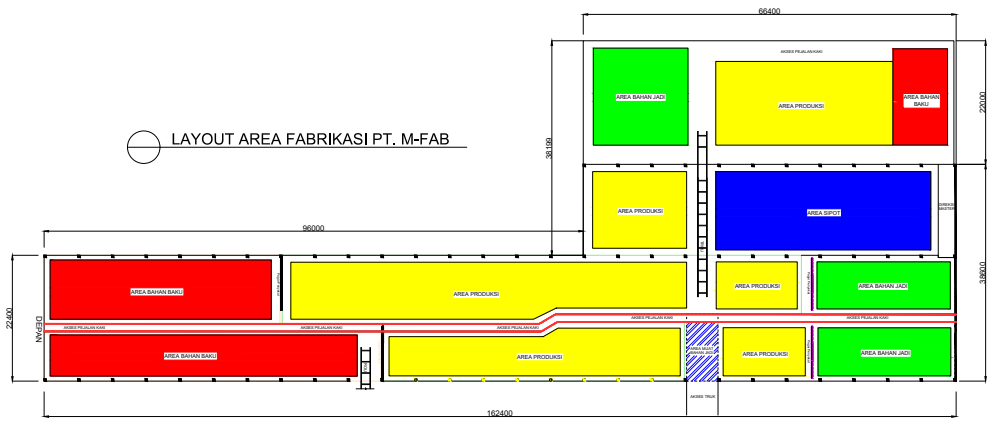
APPROVED AND CHECKED BY:

JAKARTA, 04 SEPTEMBER 2018  
PREPARED BY:

RSD JAYA KONTROLSE - ADHI

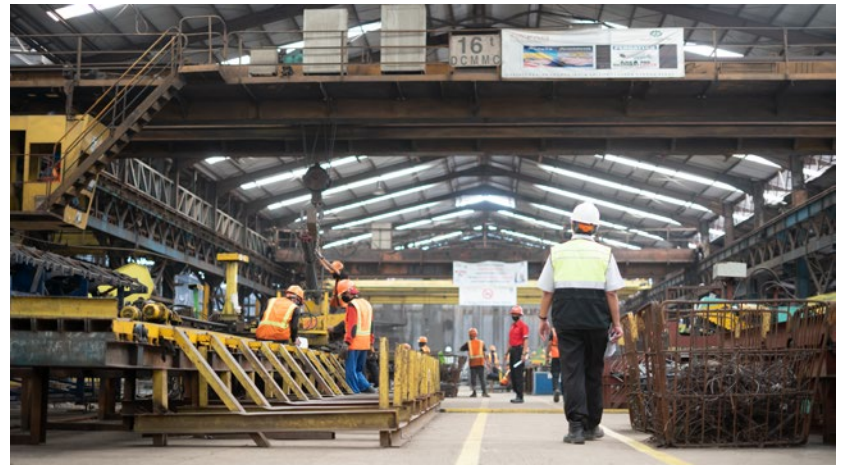
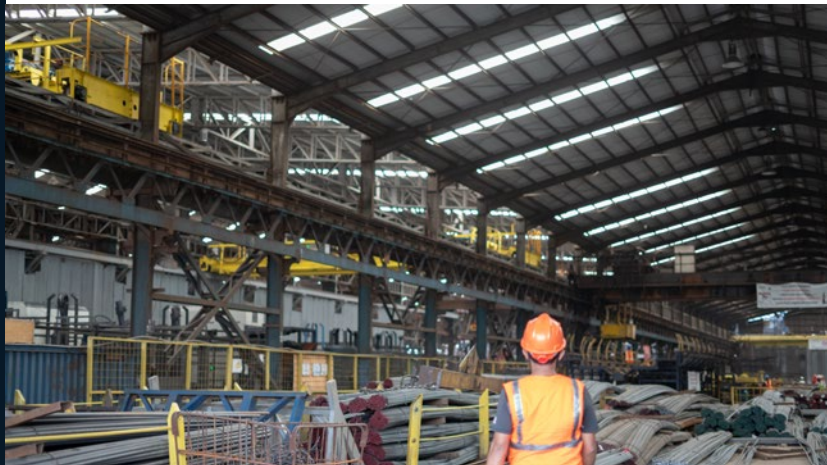
PT. Master Marunggal

LAYOUT AREA FABRIKASI PT. M-FAB

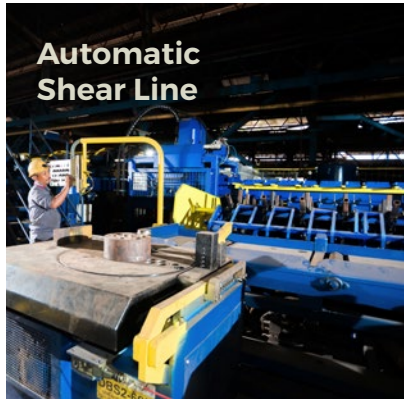




# Fabrication

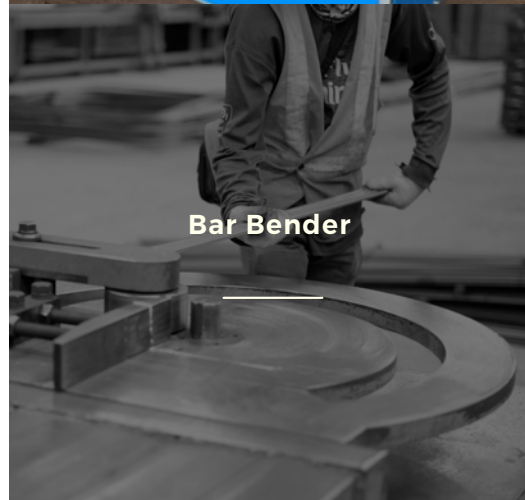


## High-end Automated Equipment

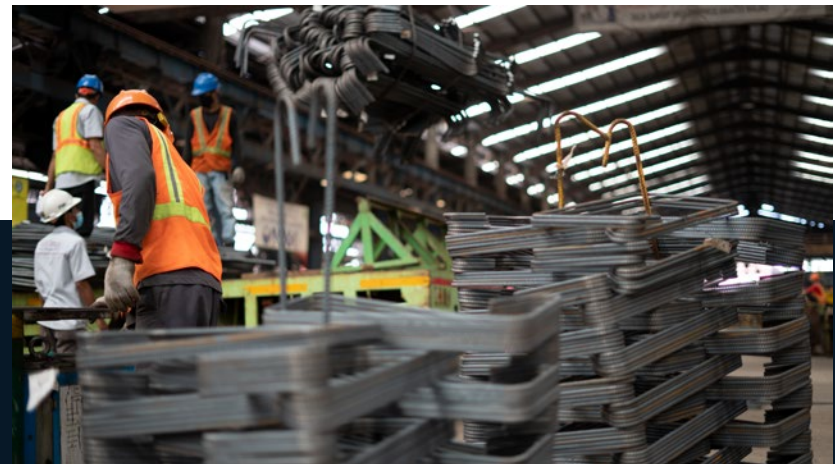




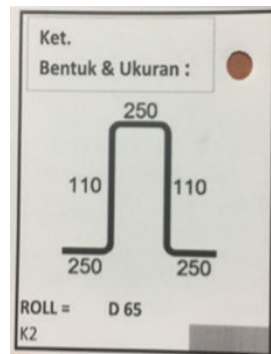
# Manual Equipment



## Shipping Packaging



# Label







## Pre-Fab Column/Wall

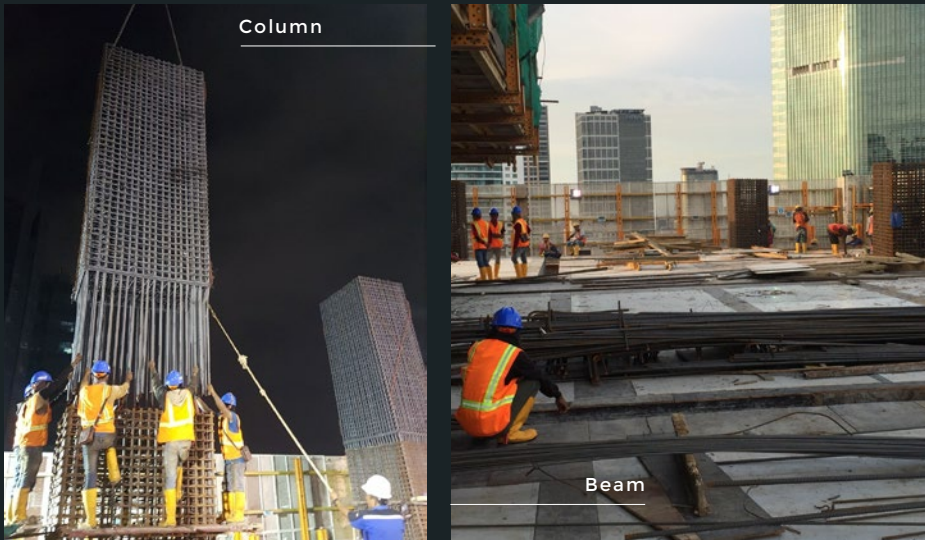




# Delivery

# Rebar Installation On Project

By Sub-contractor



## Our Clients





# Project References



MRT Jakarta



The Stature Jakarta



Proyek 6 Ruas Jalan Tol - Kelapa Gading

# Project References



Thamrin Nine Tower Jakarta



Arumaya Residence





REBAR PROCESSING CENTER



REBAR PROCESSING CENTER

Proyek : KSD Jakon - Adhi  
Item Pek. : BOX GIRDER  
Type : POC 5 - POC 7 " SEGMENT 8 "  
Diameter : C2  
Panjang : D22  
Jumlah : 1716  
Mutu : B5 4 S3



### **Our Office & Workshop**

Master Manunggal Fabrikasi  
Jl. Pegangsaan Dua Km.1  
Kelapa Gading, Jakarta Utara,  
DKI Jakarta,14250

### **Phone**

Phone : 021-4609834

### **Online**

Email : [info@mfab.co.id](mailto:info@mfab.co.id)  
Website : [www.mfab.co.id](http://www.mfab.co.id)